

Puffery



SHINNTYPE

PUFFERY Main characters of the two fonts

A B C D E F G H I
J K L M N O P Q R
S T U V W X Y Z

Puffery Regular capitals

A B C D E F G H I
J K L M N O P Q R
S T U V W X Y Z

Puffery Vintage Capitals

0 1 2 3 4 5 6 7 8 9
a b c d e f g h i j k l m n
o p q r s t u v w x y z

Numerals and lower case are common to both fonts.

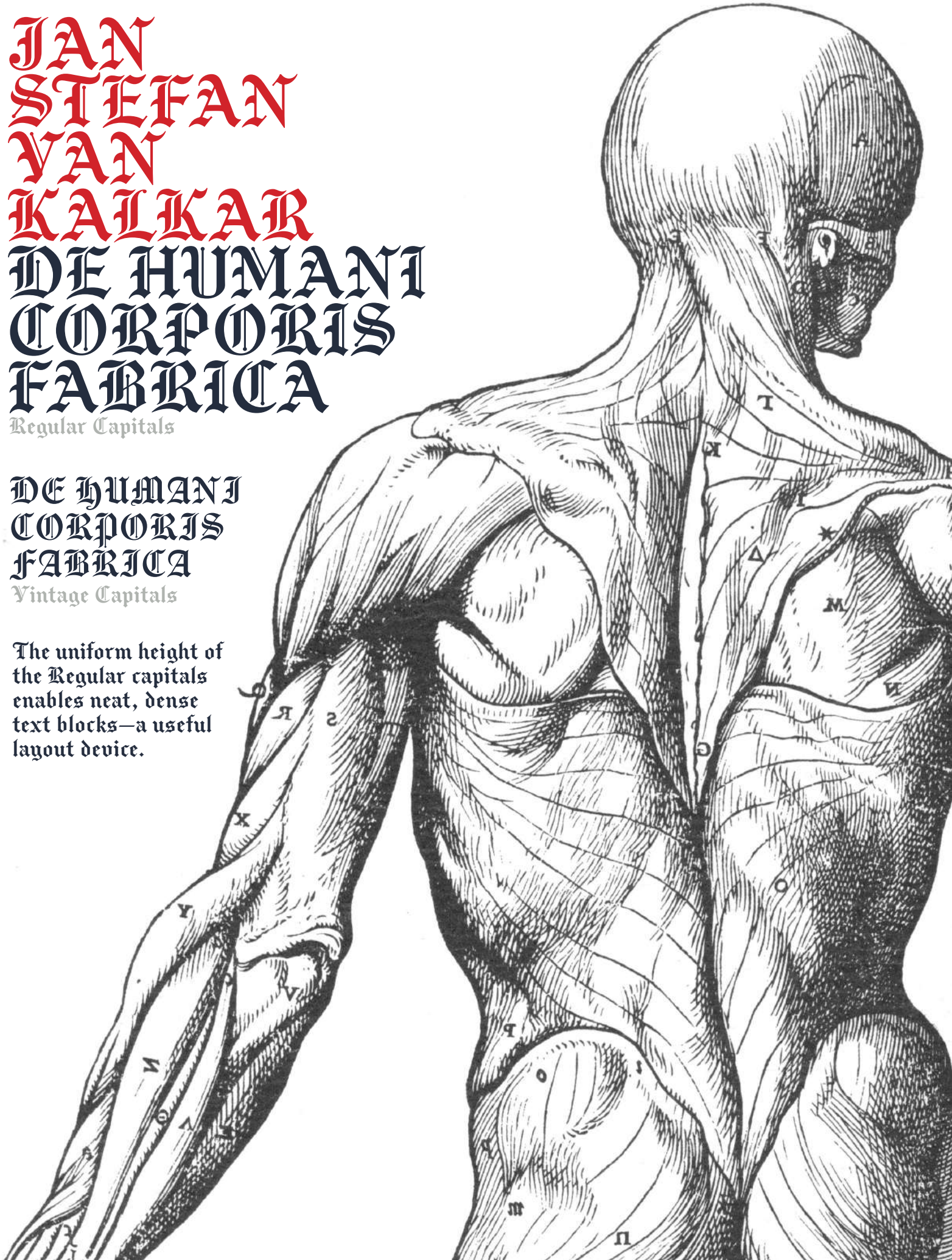
JAN
STEFAN
VAN
KAILKAR
DE HUMANI
CORPORIS
FABRICA

Regular Capitals

DE HUMANI
CORPORIS
FABRICA

Vintage Capitals

The uniform height of the Regular capitals enables neat, dense text blocks—a useful layout device.



There is no one who does not seek his own advantage everywhere,
No one who does not seek himself in all that he does,
No one who does not yearn everywhere for private gain,
This one pulls, that one pulls—all have the same love of possessing.



PIETER BRUEGEL
THE ELDER
Everyman

WILLIAM HOGARTH A Harlot's Progress

As Moll Hackabout expires from venereal disease, her maid is horrified by two doctors quarreling over the failure of each other's medicines to prolong the miserable life of the poor young woman.



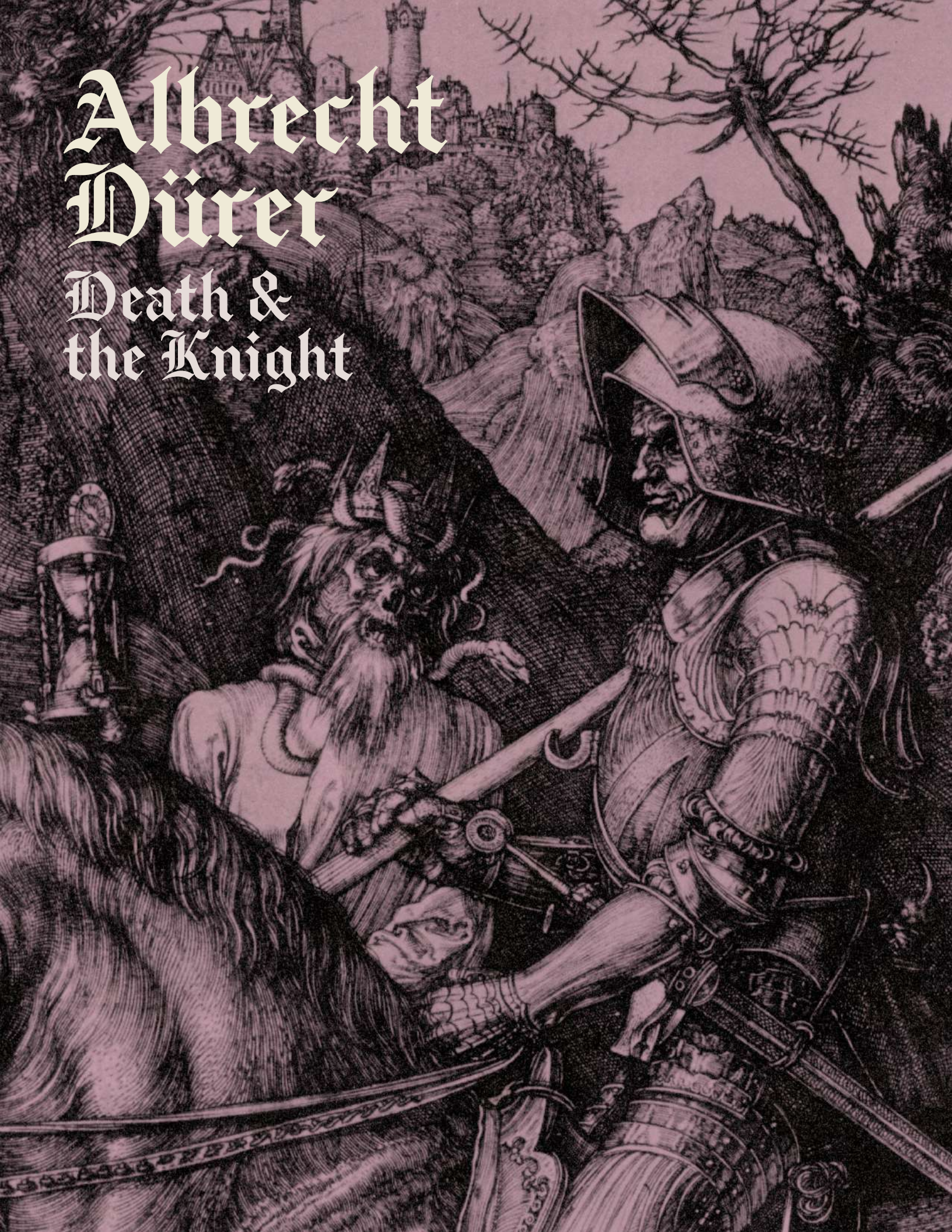
STEFANO DELLA BELLA

Icy la Mort triomphe entre les funeraillles ;
Ses plus beaux promenoirs sont les lieux des batailles ;
Son Throsne s'affermit de la cheute des mortes ;
Elle change a l'instance par ses armes subtiles
En riviere de sang les Campagnes fertiles ,
Et les plaines de Mars en montagnes de corps .



Albrecht Dürer

Death & the Knight



Sir JOHN TENNIEL

Open here I flung the shutter, when, with
many a flirt and flutter, in there stepped a
stately Raven of the saintly days of yore.



Gustave Doré

The RIME of
the ANCIENT
MARINER



**GWENDOLEN
RAYFERRAT**
The Sleepers, 1928



A. PAUL WEBER



Das erwachen · Reveille · Réveil

REGULAR CAPITALS

A Á Â Ã Ä Å Æ Ā Ą
B C Ç Ć Ĉ Ċ Đ Ę
E É Ê Ë Ē Ė Ě Ę F
G Ğ Ğ Ğ Ğ H Ĩ Í Î Ï Ĵ Ķ
J Ĵ K Ķ L Ŀ Ł Ļ M
N Ñ Ñ Ñ Ñ Ñ Ñ Ñ Ñ
Ö Ő Ő Ő Ő Ő P Q R Ŕ Ŕ Ŕ
S Š Š Š Š Š T Ŧ Ŧ Ŧ
U Ú Û Ü Ü Ü Ü Ü Ü
V W Ŷ W Ÿ X
Y Ý Ÿ Ÿ Ÿ Z Ž Ž Ž
Æ Đ Ÿ Œ Þ ð ß

VINTAGE CAPITALS

A Á Â Ã Ä Å Æ Ā Ą
B C Ç Ć Ĉ Ċ Đ Ę
E É Ê Ë Ē Ė Ě Ę F
G Ğ Ğ Ğ Ğ Ğ H Ĩ Í Î Ï Ĵ Ķ
J Ĵ K Ķ L Ŀ Ł Ļ M
N Ñ Ñ Ñ Ñ Ñ Ñ Ñ Ñ
Ö Ő Ő Ő Ő Ő P Q R Ŕ Ŕ Ŕ
S Š Š Š Š Š T Ŧ Ŧ Ŧ
U Ú Û Ü Ü Ü Ü Ü Ü
V W Ŷ W Ÿ X
Y Ý Ÿ Ÿ Ÿ Z Ž Ž Ž
Æ Đ Ÿ Œ Þ ð ß

LOWER CASE

a á â ã ä å æ ā ą
e é ê ë ě ě ě f g ğ ğ ğ
h ħ ĩ ï ï ï ï ĵ ĵ ĵ ĵ ĵ
m ñ ñ ñ ñ ñ ñ ñ ñ
ø ö ő p q r ŕ ŕ s š š š š š
t ŧ ŧ t u ú û ü ü ü ü ü ü v
w ŵ w ŵ w ŵ x y ŷ ŷ ŷ ŷ ŷ
æ ð Ÿ œ þ ð ß

ORDINALS

a o

STANDARD LIGATURES

Th ff tt ft

PROPORTIONAL FIGURES

0123456789

TABULAR FIGURES

0123456789

FRACTIONS

1/2 1/4 3/4

MATHEMATICAL

Σ Π Δ Ω μ π ∫ √ ∂ °
+ - × ÷ = ≈ ≠ ± < >
≤ ≥ ¬ ~ ^ | ! # ◊ ∞ % ‰

CURRENCY

\$ £ ¥ € ¢

DASHES

— - - - -

QUOTES

“ ” „ ‘ ’ « » ‹ › „ ,

POINTS

? ! , . : ; … † ‡

DELIMITERS & JOINERS

& (/) [\] { | }

MISCELLANEOUS

* † ‡ § ¶ ® © ™ ♦ @

☞ ☜ ☞ ☞ →