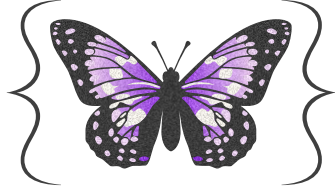


Sahlia

An elegant stencil typeface



VARIABLE AXES

Weight

a a a a a

Italic

a a

DESIGNED BY
Alanna Munro

PUBLISHED
2023

VERSION
2.0 (2026)

GLYPHS
970

STYLES
10

OPEN TYPE FEATURES
liga, case, frac, lnum,
pnum, ss01, ss02,
ss03, calt

FORMATS
otf, ttf, woff, woff2,
variable



Aa Regular

ABCDEFGHIJKLMN

OPQRSTUVWXYZ

abcdefghijklmn

opqrstuvwxyz

0123456789

&@%#()!?*

The concepts of excellence and prestige have long been communicated using high-contrast fonts. There is so much contrast in Sahlia that the joins completely vanish as if they were weathered away. The result is a stencil font made for making elegant statements with a bit of an edge. The look of Sahlia can be softened by using the ball terminal alternates set or can be exaggerated with the collection of entry strokes, exit strokes, and discretionary ligatures.

pursuit of
licity often
ne gateway
minimalism
gance with
he powers

Light 96pt (teardrop alts)

STYLES

Light fonts

Light Italic *fonts*

Regular **fonts**

Italic *fonts*

Semibold **fonts**

Semibold Italic *fonts*

Bold **fonts**

Bold Italic *fonts*

ExtraBold **fonts**

ExtraBold Italic *fonts*

CHARACTER SET

Base Alphabet

A	B	C	D	E	F	G	H	I	J	K
L	M	N	O	P	Q	R	S	T	U	V
W	X	Y	Z	a	b	c	d	e	f	g
h	i	j	k	l	m	n	o	p	q	r
s	t	u	v	w	x	y	z			

Punctuation

.	,	...	:	;	!	?	¡	¿	‘	’
“	”	,	„	'	"	<	>	«	»	—
()	[]	{	}	-	—	—	/	
	\	#	%	‰	@	&	7	§	¶	№
•	•	*	✱	†	‡	'	"	°	©	®
®	™	ª	º	ë	!'	!'				

Case Feature

@	!	?	¡	¿	()	{	}	[]
---	---	---	---	---	---	---	---	---	---	---

Numbers & Math

0	1	2	3	4	5	6	7	8	9	+
-	±	÷	×	=	<	>	≤	≥	≈	≠
*	∅	^	~							

Currency

α	\$	¢	£	¥	₹	₪	€	f	₣	₰
₱	₺	€	₪	₮	₯	₱	₲	₳	₴	₵
₶	₷	₸	₹							

Accents

ˆ	˘	˙	˚	˛	˜	˝	˜	˝	˙	˚
ˆ	˘									

Fractions

¼	½	¾	⅓	⅔	⅛	⅜	⅝	⅞	0	1
2	3	4	5	6	7	8	9	0	1	2
3	4	5	6	7	8	9	/			

Extended Language Support

À	Á	Â	Ã	Ä	Å	Ā	Ă	Ą	Ạ	Ǻ
Ǻ	À	Ả	Ã	А	Â	Ă	Ǻ	Ả	Ç	
Ć	Ĉ	Ċ	Č	Ď	Ḑ	Đ	È	É	Ê	Ë
Ē	Ĕ	È	Ę	Ě	Ė	Ê	É	Ė	Ê	Ë
Ě	Ĕ	È	Ĝ	Ğ	Ġ	Ģ	Ĝ	Ĥ	Ħ	Ħ
Ĥ	Ì	Í	Î	Ï	Ī	Ĭ	Ĭ	Į	İ	Ị
Ĭ	Į	Ĵ	Ḳ	Ḳ	Ĺ	Ł	Ł	Ł	Ł	Ł
Ñ	Ń	Ņ	Ñ	Ņ	Ò	Ó	Ô	Õ	Ö	Ō
Ö	Ö	Ō	Ō	Ō	Ō	Ō	Ō	Ō	Ō	Ō
Ō	Ō	Ō	Ō	Ō	Ō	Ō	Ō	Ō	Ō	Ō
Š	Ş	Ş	Ş	Ş	Ş	Ş	Ş	Ş	Ş	Ş
Š	Ş	Ş	Ş	Ş	Ş	Ş	Ş	Ş	Ş	Ş
Ū	Ū	Ū	Ū	Ū	Ū	Ū	Ū	Ū	Ū	Ū
Ū	Ū	Ū	Ū	Ū	Ū	Ū	Ū	Ū	Ū	Ū
Ÿ	Ÿ	Ÿ	Ÿ	Ÿ	Ÿ	Ÿ	Ÿ	Ÿ	Ÿ	Ÿ
Ÿ	Ÿ	Ÿ	Ÿ	Ÿ	Ÿ	Ÿ	Ÿ	Ÿ	Ÿ	Ÿ
Đ	Ø	Ø	Đ	?	Ɔ	IJ	Λ	Λ	L	N
Œ	Ə	Θ	X							

à	á	â	ã	ä	å	ā	ă	ą	ạ	Ǻ
Ǻ	à	ả	ã	á	â	ă	Ǻ	ả	ç	
ć	ĉ	ċ	č	ď	ḑ	đ	è	é	ê	ë
ē	ĕ	è	ę	ě	ė	ê	é	ė	ê	ë
ě	ĕ	è	ğ	ğ	ğ	ğ	ğ	ğ	ĥ	ĥ
ĥ	ì	í	î	ï	ĭ	ĭ	į	ı	ị	
ı	į	ĵ	ḳ	ḳ	ĺ	ł	ł	ł	ł	ł
ñ	ń	ņ	ñ	ņ	ò	ó	ô	õ	ö	ō
ö	ö	ō	ō	ō	ō	ō	ō	ō	ō	ō
ō	ō	ō	ō	ō	ō	ō	ō	ō	ō	ō
š	ş	ş	ş	ş	ş	ş	ş	ş	ş	ş
š	ş	ş	ş	ş	ş	ş	ş	ş	ş	ş
ū	ū	ū	ū	ū	ū	ū	ū	ū	ū	ū
ū	ū	ū	ū	ū	ū	ū	ū	ū	ū	ū
ÿ	ÿ	ÿ	ÿ	ÿ	ÿ	ÿ	ÿ	ÿ	ÿ	ÿ
ÿ	ÿ	ÿ	ÿ	ÿ	ÿ	ÿ	ÿ	ÿ	ÿ	ÿ
ð	ø	ø	þ	?	Ɔ	ʔ	ı	ij	κ	λ
λ	ı	η	œ	ɹ	ə	w	θ	χ	θ	

SS01 Teardrop

C	G	K	S	?	Ɔ	a	c	f	g	k
r	s	x	y	æ	ʔ	Ƴ	ʔ	ª	2	3
5	6	9	Ç	Ć	Ĉ	Ċ	Č	Ĝ	Ğ	Ġ
Ģ	Ģ	Ḳ	Ḳ	Ś	Ŝ	Ş	Š	Ş	Ş	à
á	â	ã	ä	å	ā	ǎ	ą	ą	ǎ	ǎ
à	ǎ	ã	ǎ	â	â	ǎ	ǎ	ǎ	æ	ç
ć	ĉ	ċ	č	ĝ	ğ	ğ	ğ	ğ	ḵ	ḵ
κ	í	ı	ř	ś	ŝ	ş	š	ş	ş	ý
ÿ	ÿ	ÿ	ÿ	ÿ	ÿ	ÿ	2	3	5	6
9	½	⅓	⅔	¾	⅜	⅝	©	©	©	\$
€	f	G	©	£	£	©	ff	fk	ffk	f?
ff?										

Italic Alternates

a	e	f	g	k	v	w	x	à	á	â
ã	ä	å	ā	ǎ	ą	ą	ǎ	ǎ	ǎ	ǎ
ã	ǎ	â	â	ǎ	ã	å	è	é	ê	ë
ē	ě	è	ę	ě	ę	ē	é	ê	é	é
ẽ	é	ğ	ğ	ğ	ğ	ğ	ḵ	ḵ	ḵ	ô
ò	ó	ö	œ	cé	œ	ð	κ	ª	ª	

SS02 Single Crossbar

A	À	Á	Â	Ã	Ä	Å	Ā	ǎ	Ą	Ạ
ǎ	ǎ	ǎ	ǎ	ǎ	ǎ	ǎ	ǎ	ǎ	ǎ	ǎ
H	Ĥ	Ĥ	Ĥ	Ĥ						

Ligatures

fi	fj	ff	fb	fh	fk	fl	f?	fl	fl	fp
ffi	ffb	ffh	ffk	ffl	ffl	ffl	ff?			

FEATURES

Ligatures

defies → defies

Case-specific Forms

(@NOTE) → (@NOTE)

SS01 (Teardrop)

Crags → Crags

SS02 (Single Crossbar)

HAT → HAT

SS03 (Lambda Wavy Bar)

ΛuΛim → ΛuΛim

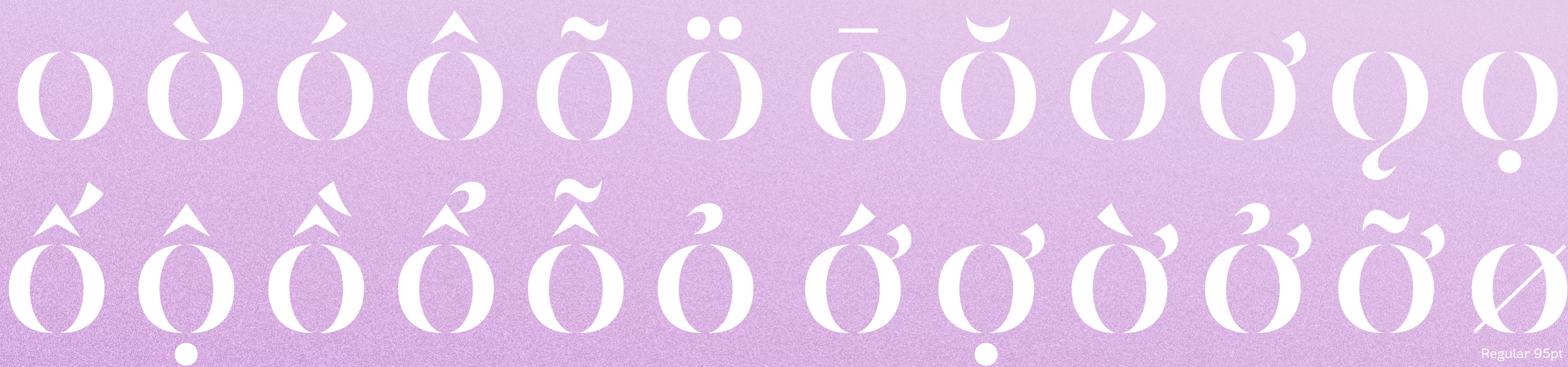
Fractions

2 1/2 cups → 2 ½ cups



the purs
simplic
become
g'ateaway
elegant
Minimal
when ex

ExtraBold Italic 96pt



LANGUAGES SUPPORTED: 327

SCRIPTS: LATIN

Acheron	Bikol	Danish	Hopi	Kikuyu	Manx	Northern Qiangdong Miao	Romanian	Southern Sotho	Umbundu
Achinese	Bini	Dehu	Huastec	Kimbundu	Maore Comorian	Northern Sami	Romansh	Spanish	Ume Sami
Acholi	Bislama	Dimli	Hungarian	Kinyarwanda	Maori	Northern Uzbek	Rotokas	Skwxwú7mesh	Upper Guinea Crioulo
Achuar-Shiwiar	Borana-Arsi-Guji Oromo	Dutch	Icelandic	Kirmanjki	Mapudungun	Norwegian	Rundi	Sranan Tongo	Upper Sorbian
Afar	Bosnian	Eastern Arrernte	Ido	Kituba (DRC)	Marshallese	Nuučaañut	Samoan	Standard Estonian	Venetian
Afrikaans	Breton	Eastern Oromo	Iloko	Klingon	Matsés	Novial	Sango	Standard Latvian	Veps
Aguaruna	Buginese	Efik	Inari Sami	Kongo	Mauritian Creole	Nyanja	Sangu (Tanzania)	Standard Malay	Vietnamese
Ahtna	Candoshi-Shapra	English	Indonesian	Konzo	Meriam Mir	Nyankole	Saramaccan	Sundanese	Volapük
Alekano	Caquinte	Esperanto	Interglossa	Kven Finnish	Meru	Occitan	Sardinian	Swahili	Võro
Aleut	Caribbean Hindustani	Faroese	Interlingua	Kölsch	Mezquital Otomi	Ojiltán Chinantec	Scots	Swedish	Wallisian
Alonquin	Cashibo-Cacataibo	Fijian	Interlingue	Ladin	Minangkabau	Orma	Scottish Gaelic	Swiss German	Walloon
Amahuaca	Cashinahua	Filipino	Irish	Ladino	Mirandese	Oroqen	Secoya	Tagalog	Walser
Amarakaeri	Catalan	Finnish	Istro Romanian	Lakota	Mizo	Otuho	Sena	Tahitian	Waray (Philippines)
Amis	Cebuano	French	Italian	Latgalian	Mohawk	Palauan	Seri	Talysh	Wartpiri
Anaang	Central Aymara	Friutian	Ixcatlán Mazatec	Lithuanian	Montenegrin	Pampang	Seselwa Creole French	Tedim Chin	Wayuu
Andaandi, Dongolawi	Central Kurdish	Gagauz	Jamaican Creole English	Lojban	Munsee	Papantla Totonac	Shawnee	Tetum	Welsh
Anuta	Central Nahuatl	Galician	Japanese	Lombard	Murrinh-Patha	Papiamento	Shipibo-Conibo	Tetun Dili	West Central Oromo
Aragonese	Chachi	Ganda	Javanese	Low German	Muslim Tat	Paraguayan Guaraní	Shona	Ticuna	Western Abnaki
Arbëreshë Albanian	Chamorro	Garifuna	Jola-Fonyi	Lower Sorbian	Mwani	Pedi	Shuar	Tlingit	Western Frisian
Asháninka	Chavacano	German	K'iche'	Lozi	Mískito	Picard	Sicilian	Toba	Wiradjuri
Ashéninka Perené	Chiga	Gheg Albanian	Kabuverdianu	Luba-Lulua	Naga Pidgin	Pichis Ashéninka	Silesian	Tojolabal	Wolof
Atayal	Chiltepec Chinantec	Gilbertese	Kaingang	Lule Sami	Navajo	Piemontese	Slovak	Tok Pisin	Xhosa
Balinese	Chokwe	Gooniyandi	Kala Lagaw Ya	Luo (Kenya & Tanzania)	Ndonga	Pijin	Slovenian	Tokelau	Yanesha'
Banjar	Chuukese	Gourmanchéma	Kalaallisut	Luxembourgish	Neapolitan	Pintupi-Luritja	Soga	Tonga (Tonga Islands)	Yao
Bari	Cimbrian	Guadeloupean Creole	Kalenjin	Macedo-Romanian	Ngazidja Comorian	Pipil	Somali	Tonga (Zambia)	Yoruba
Basque	Cofán	French	Kamba (Kenya)	Madurese	Nisga'a	Pite Sami	Soninke	Tosk Albanian	Yucateco
Batak Dairi	Cook Islands Māori	Gusii	Kaonde	Makonde	Niuean	Pohnpeian	South Azerbaijani	Tsakhur	Zapotec
Batak Karo	Cornish	Gwich'in	Kaqchikel	Malagasy	Nobiin	Polish	South Marquesan	Tumbuka	Zulu
Batak Mandailing	Corsican	Haitian	Karelian	Malaysian	Nomatsiguenga	Portuguese	South Ndebele	Turkish	Zuni
Batak Simalungun	Creek	Halkomelem	Kashubian	Maltese	North Azerbaijani	Potawatomi	Southern Aymara	Turkmen	Záparo
Batak Toba	Crimean Tatar	Hani	Kekchí	Mandinka	North Marquesan	Purepecha	Southern Qiangdong	Tzeltal	
Bemba (Zambia)	Croatian	Hawaiian	Kenzi, Mattokki	Mandjak	North Ndebele	Páez	Miao	Tzotzil	
Bena (Tanzania)	Czech	Hiligaynon	Khasi	Mankanya	Northern Kurdish	Quechua	Southern Sami	Uab Meto	

Specimen

Great Purple Emperor
charonda / Peacock Butterfly

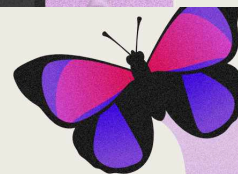


Papilio bianor / Agrias Butterfly
na sardanapalus



BUTTERFLIES OF ACNH

<p><i>Specimen</i> CHOCOLATE</p> <hr/> <p>85% Dark Chocolate with Salal Berries</p> 	<p><i>Specimen</i> CHOCOLATE</p> <hr/> <p>65% Milk Chocolate with Spruce Tips</p> 	<p><i>Specimen</i> CHOCOLATE</p> <hr/> <p>70% Dark Chocolate with Sea Salt</p> 
--	--	---



LIGHT
REGULAR
SMBOLD
BOLD
EXBOLD

the study of butterflies
the study of butterflies
the study of butterflies
the study of butterflies
the study of butterflies



Lepidopterology is a specialized branch of entomology.

SAHLIA

TYPE TESTER & PRICING
arcanetype.com/fonts/sahlia

LICENSING
arcanetype.com/licensing